

What's new in Release 20.2

January 2021

LUMEN[®]

Table of contents

Upgrade Overview and Timeline	3
Versa Analytics	3
Alarm Summary Reports	3
Analytics View in Appliance Context	5
Application Description Display	6
Map Enhancements	7
Min/Max/Average/95 Percentile Usage Reports	9
Regular Expression (Regex) Filters for Logs	9
Voice/Video/Data/SaaS App Report	10
Versa Monitor	11

This article lists the new features and enhancements in Versa Software Release 20.2, for Releases 20.2.0 (simply called 20.2) through 20.2.2.

Upgrade overview and timeline

Versa Directors will be upgraded to the 20.2 software version in 4Q 2020. After the Directors are upgraded, the new look and features described below will be available. Depending on which Director a customer is assigned to and the 4Q 2020 timeline, individual CPE upgrades will be planned with customers starting in 4Q 2020 and carrying into 1Q 2021. *It is important to note that the software is backwards compatible to the 16.1R2 version running on customer CPE currently, but all new features may not be fully available until the individual CPE is upgraded to version 20.2.

Support will work to schedule customer upgrades during this timeline.

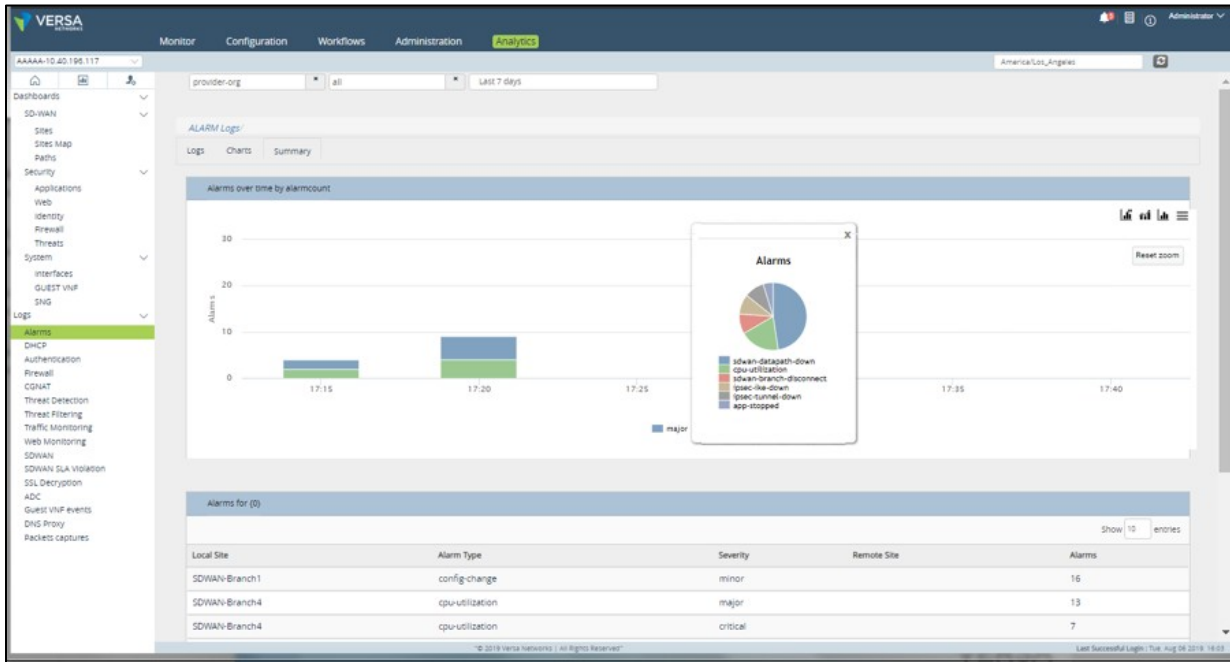
Versa Analytics

This section describes the main features and enhancements in Versa Analytics Release 20.2.

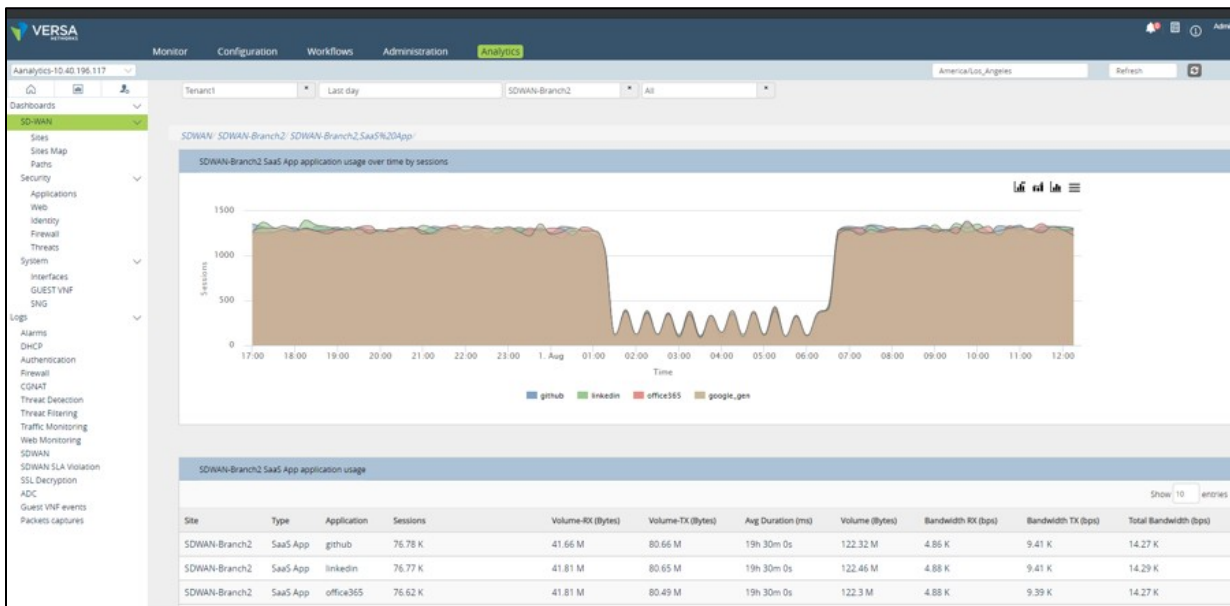
Alarm summary reports

In addition to individual alarms provided through the search engine, the summary tab provides an aggregated view of current and historical alarms for advanced statistics, including trends, and correlation of various alarms events and sources. These statistics are provided by Analytics engine and can be stored for historical reporting.

The time-series view provides a quick insight into the most important alarms at different time interval, allowing you to quickly identify issues and affected components in the network. You can drill down on any interval for detailed information.

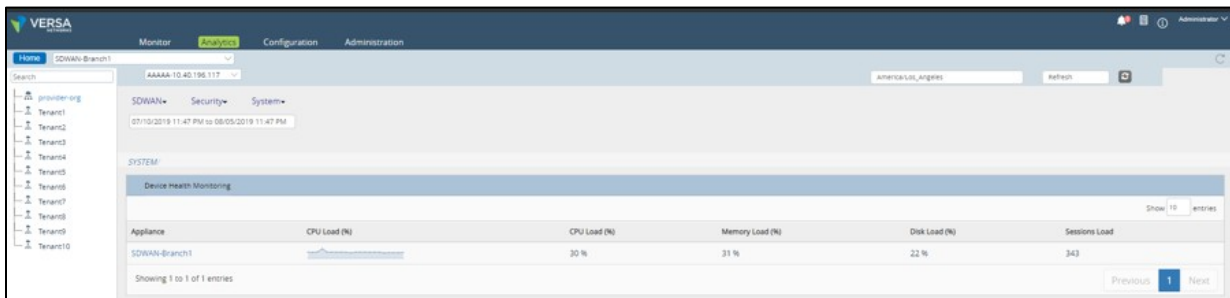
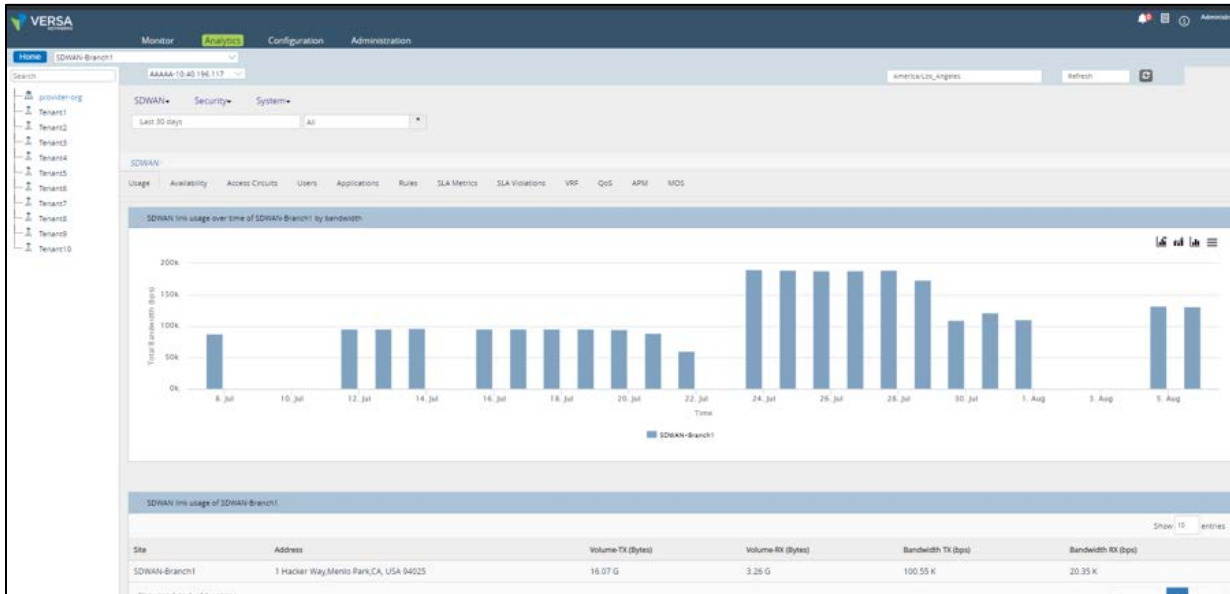


Drill down by clicking on an alarm of a time block, provides appliance details:



Analytics view in Appliance context

When Versa Director is in a specific appliance context, you can see analytics reports for the appliance without having to change to Director view.



Application description display

Many application-based reports reference well-known and not well-known applications that are being accessed by customer traffic. You can display the details of an application when you hover on the application string:

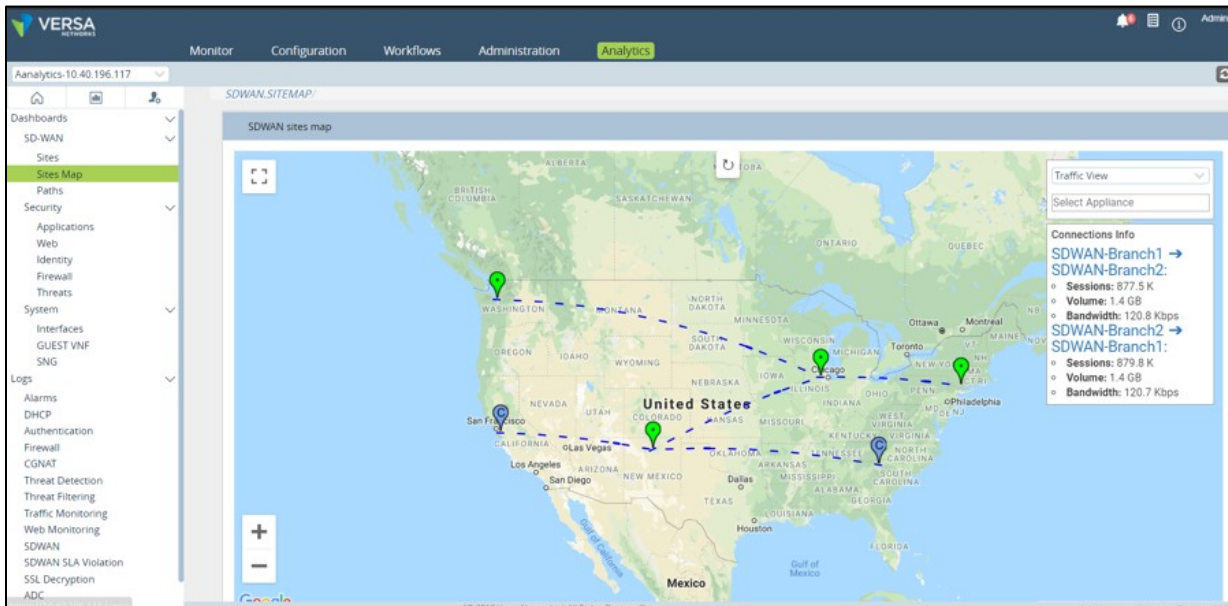
The screenshot shows a web interface for monitoring SDWAN-Branch1. The left sidebar contains a navigation menu with categories like Dashboards, Sites, Security, Applications, System, and Logs. The main content area displays a table titled 'Applications usage of SDWAN-Branch1'. The table has columns for Site, Application, Sessions, Volume-RX (Bytes), Volume-TX (Bytes), Avg Duration (ms), Volume (Bytes), Bandwidth RX (bps), and Bandwidth. A tooltip is shown over the 'stackoverflow' application entry, providing a brief description: 'Stack Overflow is a website offering questions and answers on a wide range of topics concerning computer programming.'

Site	Application	Sessions	Volume-RX (Bytes)	Volume-TX (Bytes)	Avg Duration (ms)	Volume (Bytes)	Bandwidth RX (bps)	Bandwidth
SDWAN-Branch1	unknown_tcp	14.18 K	567.07 K	850.76 K	3h 35m 0s	1.38 M	361	542
SDWAN-Branch1	http	5.98 K	4.26 M	2.51 M	3h 35m 0s	6.76 M	2.71 K	1.6 K
SDWAN-Branch1	alibaba	4.49 K	266.66 M	11.48 M	3h 35m 0s	278.14 M	170.11 K	7.32 K
SDWAN-Branch1	windows_azure	4.49 K	385.89 M	14.85 M	3h 35m 0s	400.74 M	246.16 K	9.48 K
SDWAN-Branch1	instagram	4.49 K	75.87 M	6.05 M	3h 35m 0s	81.92 M	48.39 K	3.85 K
SDWAN-Branch1	https	2.99 K	512.43 M	16.9 M	3h 35m 0s	529.33 M	326.78 K	10.78 K
SDWAN-Branch1	reddit	2.99 K	800.55 M	23.73 M	3h 35m 0s	824.28 M	511.02 K	15.15 K
SDWAN-Branch1	apple	2.99 K	97.81 M	5.09 M	3h 35m 0s	102.9 M	62.38 K	3.24 K
SDWAN-Branch1	stackoverflow	2.68 K	37.77 M	2.63 M	3h 35m 0s	40.4 M	24.03 K	1.67 K
SDWAN-Branch1				8.65 M	3h 35m 0s	240.09 M	147.6 K	5.52 K

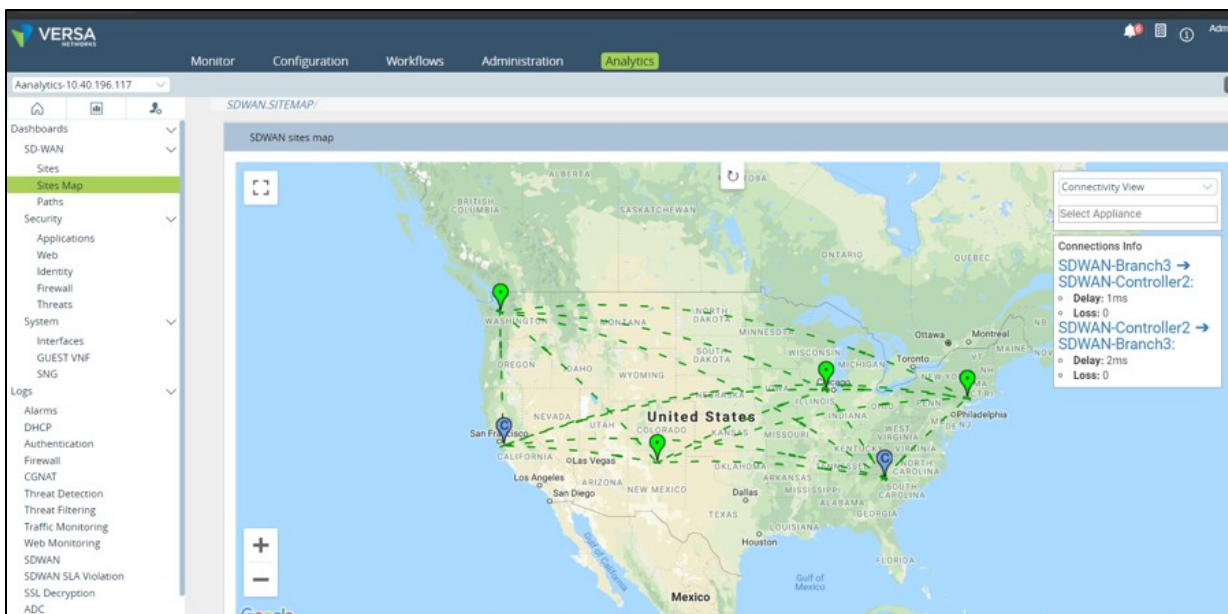
Map enhancements

You can view network, traffic, connectivity, alarms, and threats on the map. These options are available only for Google Maps.

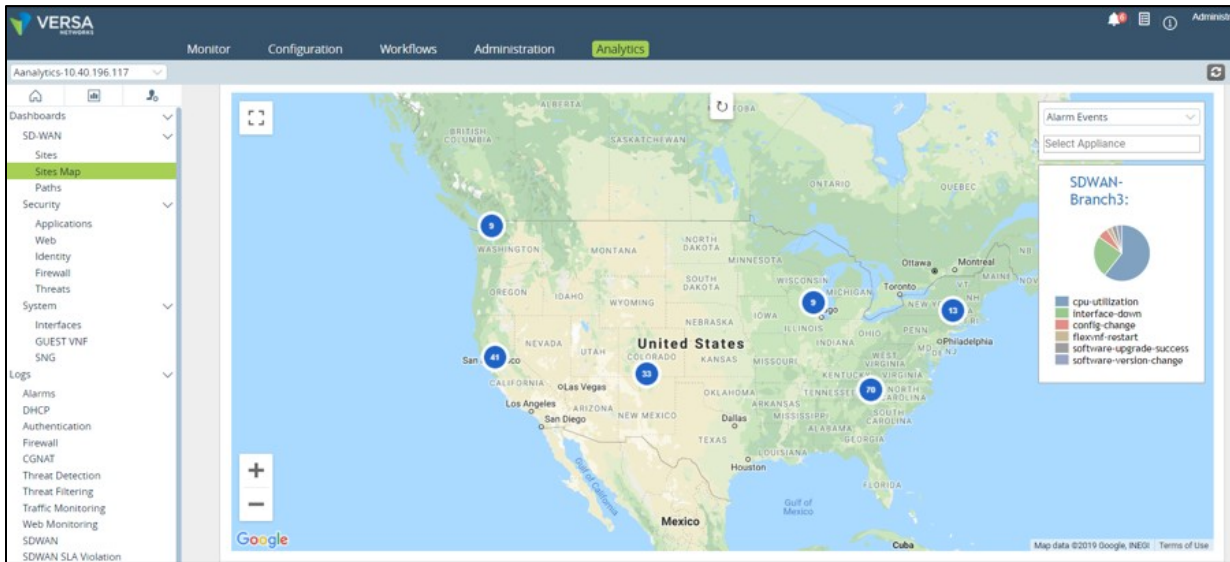
Traffic View shows site-to-site traffic for the specified interval:



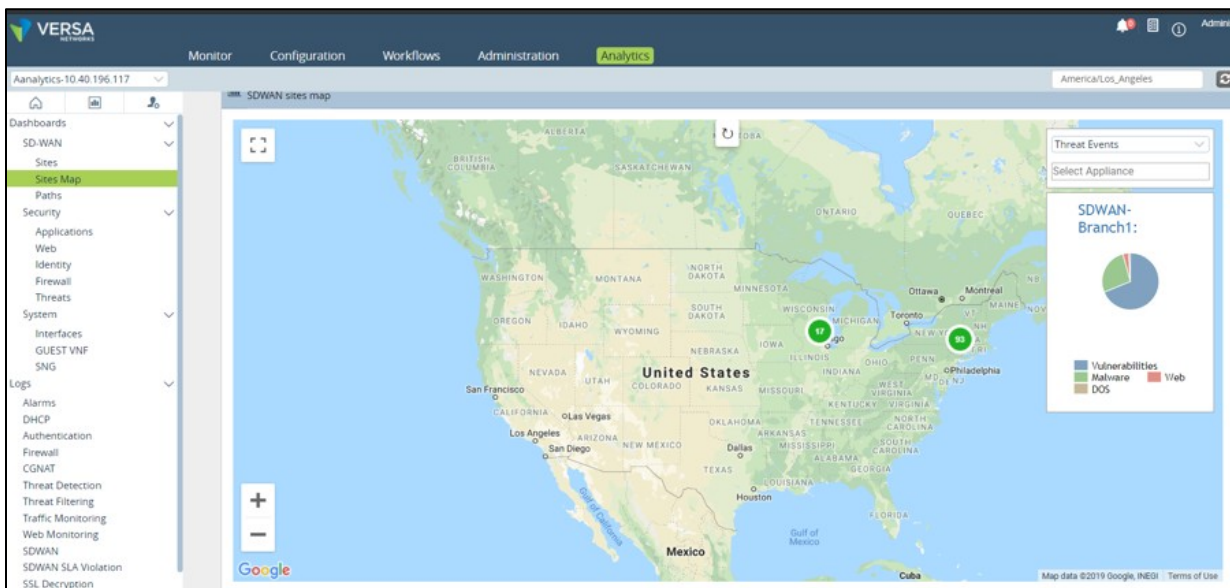
Connectivity view shows site-to-site connectivity status based on SLA for the specified interval:



Alarm view shows sites with alarms. Drill down on the site to show the top alarms for that site:



Threat View shows sites with security threat events. Drill down on the site to show the top threats for that site:



Min/max/average/95 percentile usage reports

In the reporting framework, for all usage-based metrics, you can display minimum, maximum, average, median, and 95th percentile values by selecting the metrics that have the "-stats" option. For example, to obtain the site usage bandwidth detailed statistics, select bandwidth-stats metrics option:

Site	Address	Min Total Bandwidth (bps)	Max Total Bandwidth (bps)	Avg Total Bandwidth (bps)	Median Total Bandwidth (bps)	95th Perc. Total Bandwidth (bps)
SDWAN-Branch2	29 Lewis Street Geneva IL 60134	14.43 K	620.75 K	564.63 K	614.32 K	617.81 K
SDWAN-Branch1	7605 North Sunbeam Street Westbury, NY 11590	14.91 K	243.75 K	221.28 K	238.62 K	242.72 K
SDWAN-Branch4	3503 Pinnicknick Street Seattle WA 98101	14.27 K	244.39 K	220.77 K	239.37 K	242.58 K
SDWAN-Branch3	1147 Reel Avenue Chimayo NM 87522	19.96 K	238.46 K	213.81 K	230.59 K	235.66 K
SDWAN-Controller1	2953 Bunker Hill Lane,Santa Clara,CA,USA 95054	21.14 K	39.96 K	37.23 K	39.24 K	39.51 K
SDWAN-Controller2	4505 Mill Street Piedmont SC 29673	16.9 K	35.38 K	32.35 K	33.48 K	35.11 K

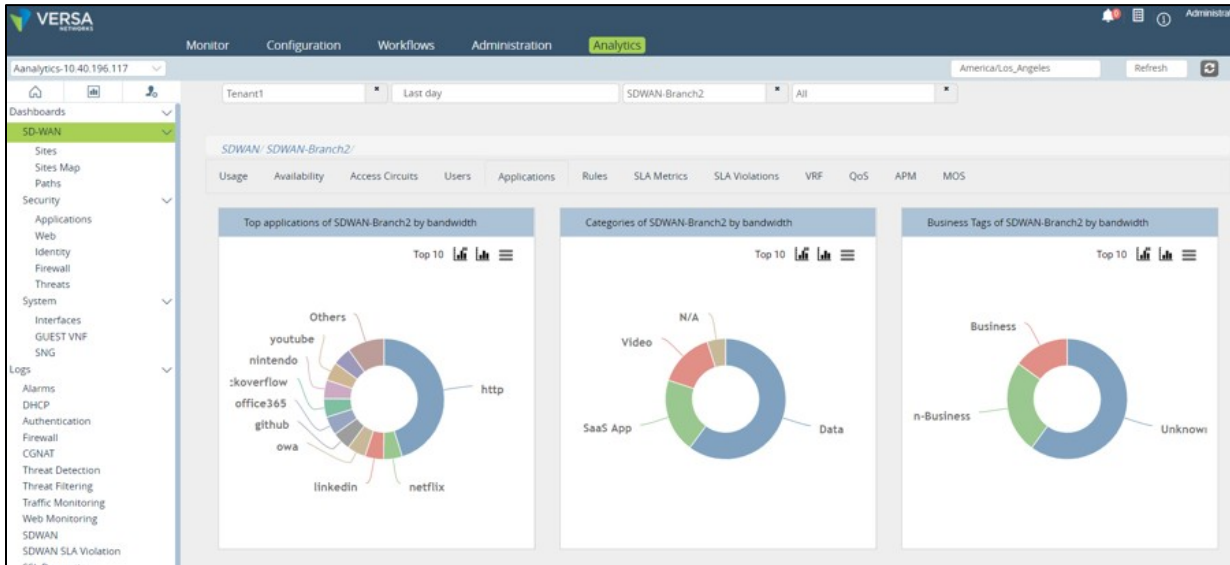
Regular expression (Regex) filters for logs

You can use regex filters on logs. For example, to filter all traffic with IP prefix 172.0.0.0/8 and applications with *bab*, you can use the following query:

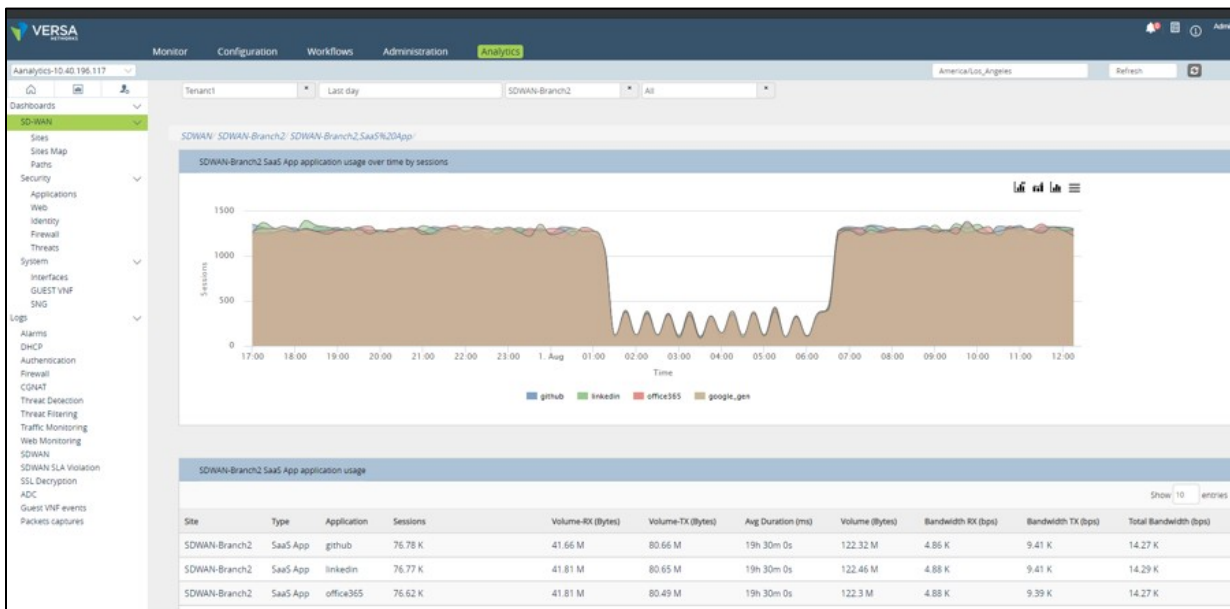
Time	Source IP	Destination IP	Source Port	Destination Port	Application	URL Category
Aug 6th 2019, 10:57:19 PM PDT	172.16.11.108	205.204.101.142	54889	443	alibaba	business_and_economy
Aug 6th 2019, 10:57:19 PM PDT	172.16.11.108	208.185.115.91	48458	443	alibaba	business_and_economy
Aug 6th 2019, 10:57:19 PM PDT	172.16.11.108	205.204.101.142	58775	443	alibaba	business_and_economy

Voice/video/data/SaaS app report

In the Application tab on the site dashboard, a report provides the per-voice/video/SaaS app category.

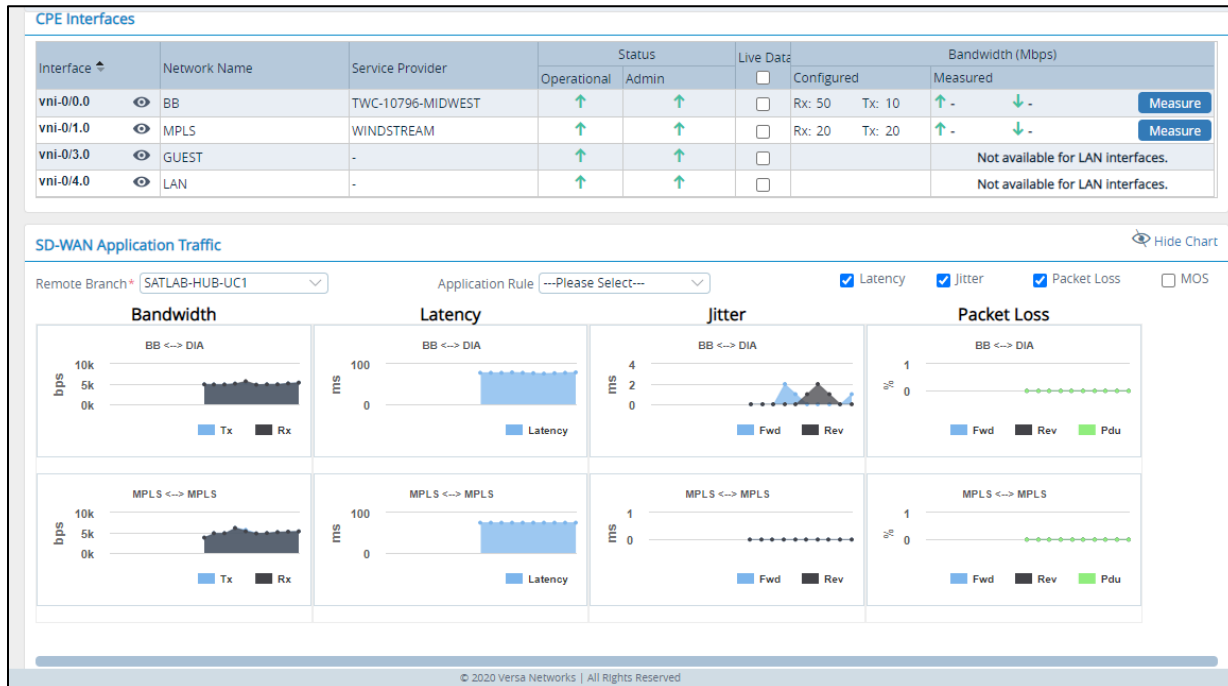


Drilling down provides application usage per category:



Versa Monitor

Improved SDWAN traffic monitoring including latency, jitter, packet loss, MOS:



Enhanced drill down on SDWAN sessions:

